

March 2025

CCSE UPDATE

BCU Cmdr Caroline Haines

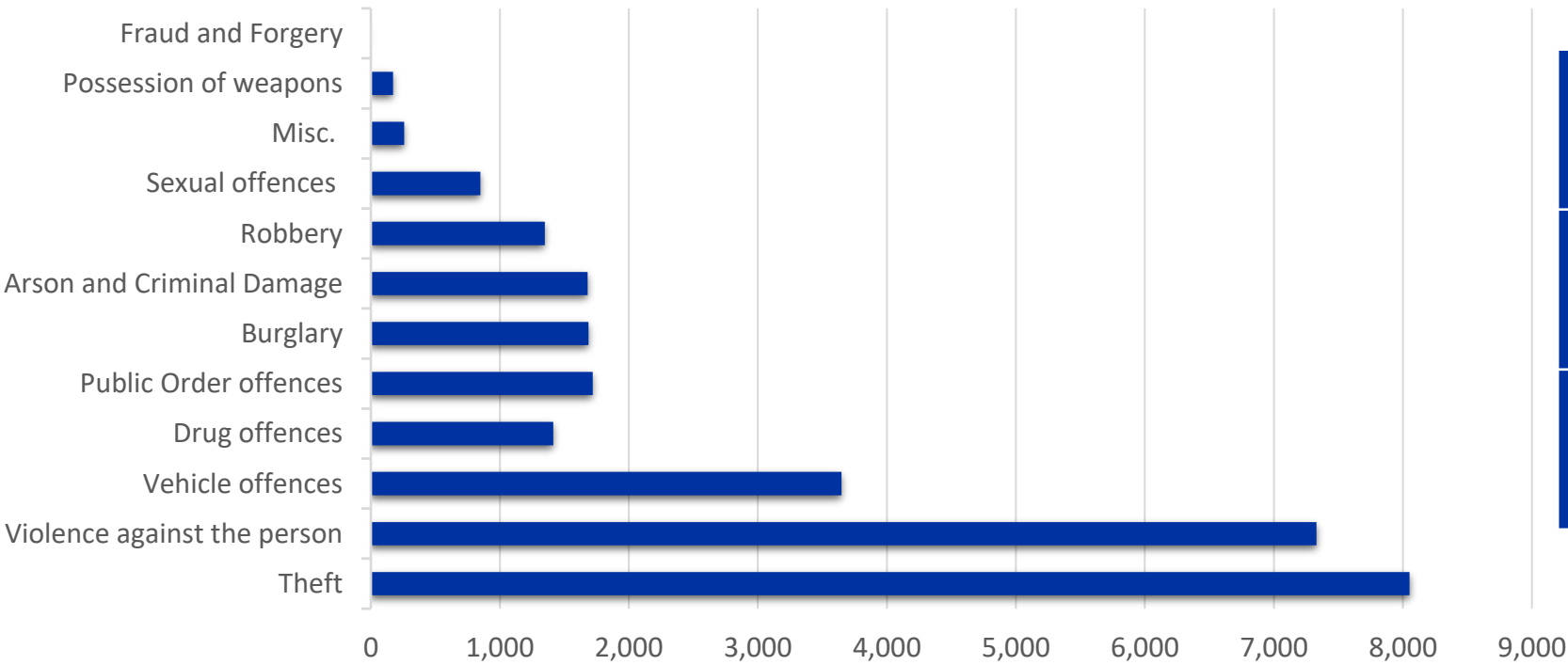
Author D/Supt Ian Martin

Head of Neighbourhood Policing for Haringey

Overview of crimes in Haringey January 2024 to December 2024

Metropolitan Police	Offence Count – 948,328	2023 comparison +1.9%	Positive Outcome – 66,858	2023 comparison -10.5%
Haringey	Offence Count – 28,161	2023 comparison - 5.6%	Positive Outcome – 2,240	2023 comparison -10.3%

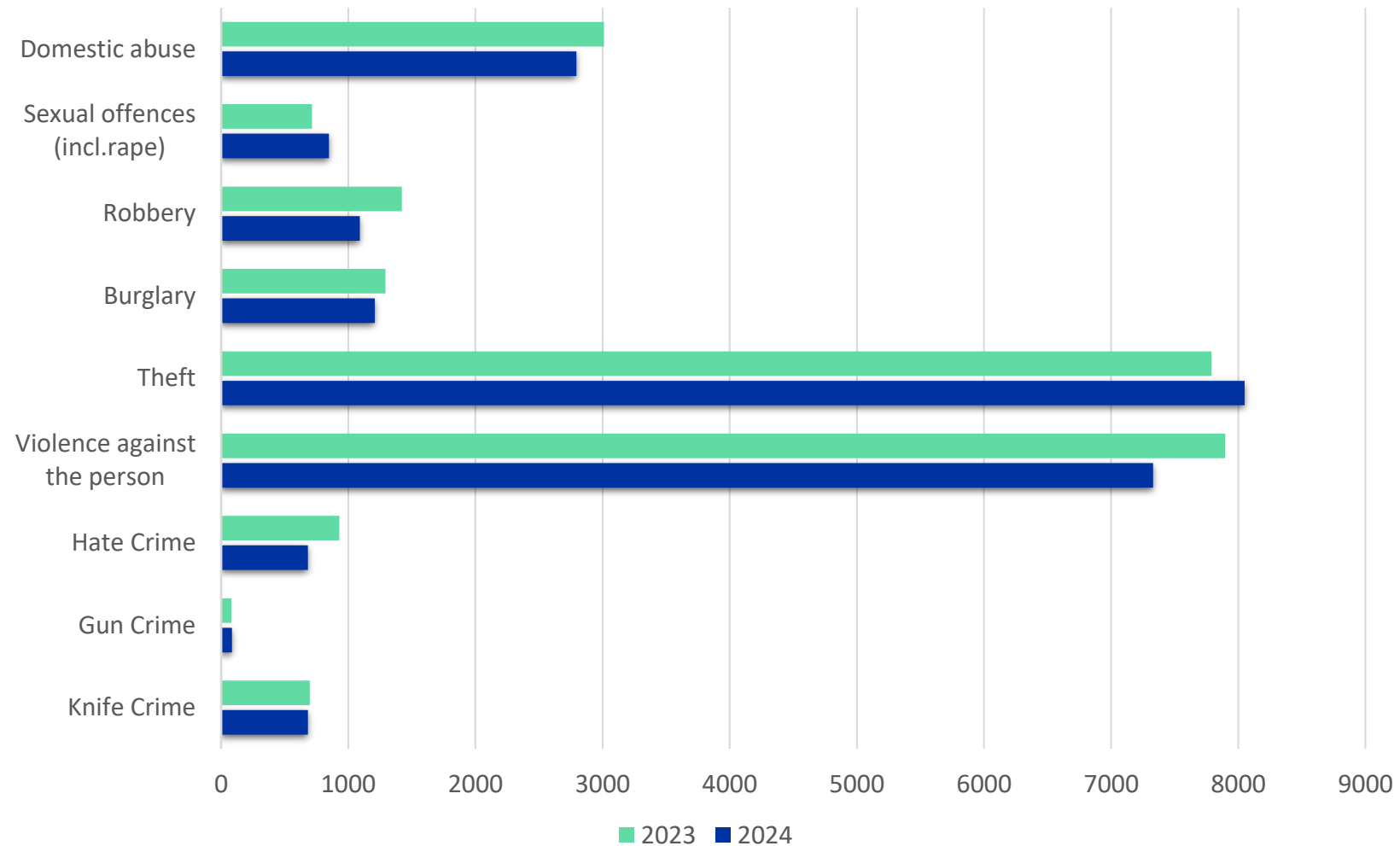
Volumes by Offence Type



Highest Month	July – 2,608
Lowest Month	March – 2,216
Average Offences per month	2,347

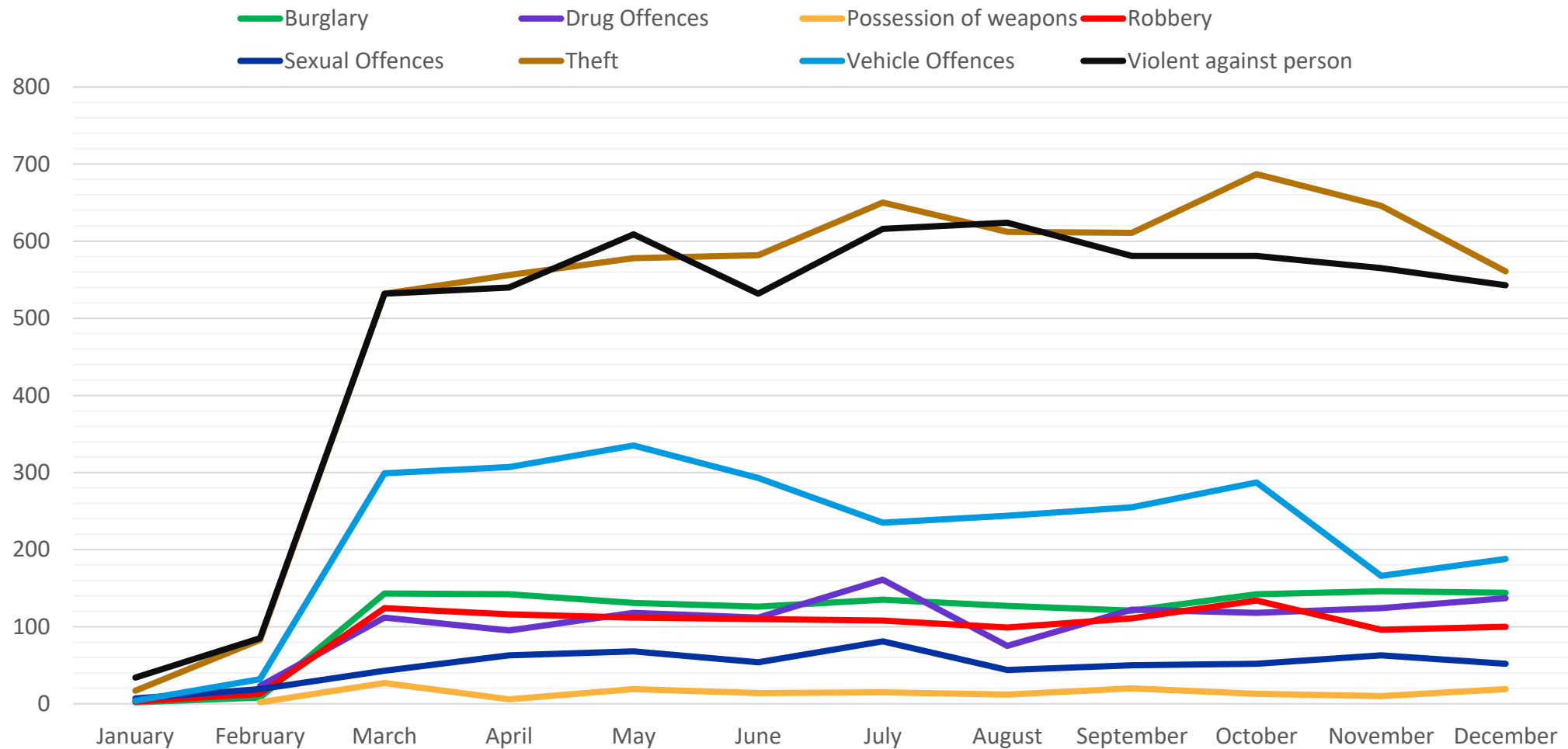
Comparison of Crimes in Haringey 2023/2024

Comparison 2023 - 2024



Overall crime volume has reduced by 5.6% in Haringey for 12 months to Dec 2024.

Haringey Crime Overview – 2024 Monthly Tracker by Offence Type



Haringey Crime Overview – Ward data by crime type last 12m vs previous 12m

	Burglary	Robbery	Theft Other	Theft from MV	Theft of MV	Vehicle Interference	Hate crime	Violence with Injury	Knife Crime
Bruce Castle	-27.1%	4.8%	-37.1%	-37.3%	16.7%	-38.5%	-31.6%	-25.4%	25.0%
Northumberland Park	6.0%	-4.4%	-6.1%	-30.1%	-14.4%	15.4%	-41.9%	5.5%	-4.1%
Tottenham Central	-35.9%	1.3%	-21.0%	-40.6%	10.4%	-46.2%	-51.3%	-36.6%	-13.3%
Tottenham Hale	-9.1%	-22.5%	-19.3%	-21.5%	17.1%	50.0%	19.7%	-18.8%	-35.0%
West Green	8.2%	-31.7%	-25.2%	-32.3%	-1.9%	12.5%	-17.6%	-26.2%	19.0%
Hermitage & Gardens	39.2%	-33.3%	-45.3%	-28.3%	-31.3%	-18.2%	-11.0%	-26.7%	-27.6%
Seven Sisters	1.7%	38.4%	-10.0%	-12.4%	9.4%	114.3%	-37.6%	-29.2%	58.8%
South Tottenham	-24.4%	3.7%	-31.3%	-17.1%	-23.6%	11.1%	-17.1%	-29.5%	-13.7%
St Anns	-11.1%	42.9%	-38.6%	-36.3%	-8.3%	-15.4%	-21.2%	-9.3%	170.0%
Crouch End	-14.9%	132.0%	-22.3%	3.6%	-36.1%	150.0%	21.1%	-7.3%	54.5%
Fortis Green	34.9%	-31.8%	-51.5%	-37.3%	-25.9%	-35.0%	-30.6%	-42.2%	50.0%
Highgate	-10.0%	13.9%	-7.4%	-10.8%	-17.6%	-14.3%	-32.1%	-17.3%	5.9%
Hornsey	-37.1%	5.7%	-39.5%	-9.3%	-8.5%	-6.3%	-35.7%	-28.6%	-15.8%
Muswell Hill	-16.1%	-15.6%	-15.8%	-47.5%	-18.5%	0.0%	39.0%	-29.5%	64.7%
Stroud Green	12.2%	-43.6%	-28.7%	-18.8%	-27.1%	-56.3%	-53.3%	-23.3%	-27.0%
Alexander Park	4.3%	-73.4%	-42.9%	5.1%	-50.0%	12.5%	-17.4%	-27.3%	-80.0%
Bounds Green	34.3%	0.0%	1.2%	-8.5%	-7.3%	-8.3%	-35.0%	-1.6%	169.2%
White Hart Lane	1.5%	-41.8%	-29.1%	-55.8%	0.0%	-38.5%	-39.7%	-15.8%	-7.9%
Woodside	26.0%	-20.0%	-42.1%	-56.0%	8.8%	-10.0%	-48.3%	-14.9%	60.6%
Harringay	-42.3%	25.0%	-39.8%	-33.5%	-31.7%	66.7%	-16.7%	-9.9%	32.9%
Noel Park	-22.8%	-24.0%	-26.7%	-35.2%	-16.1%	-29.2%	-36.0%	-15.4%	20.8%



Areas of note for the MPS

HMICFRS and Engage

- HMICFRS placed the MPS into 'Engage' (enhanced monitoring) in June 2022.
- Significant changes have taken place in call handling, Public Protection, Professional Standards and across the MPS.
- Re-visit by HMICFRS to the MPS at the end of 2024 has now removed all areas of Engage.

A focus on Crime Performance

- Clear data now available to show performance at variety of levels.
- Focus is ensuring all Officers are aware of performance and working hard towards crime reductions and positive action.

Organisational review with funding challenges

- Budget shortfall from Government and increased costs mean some areas are unsustainable.
- 'Tough Choices' to be made regarding some areas.
- Focus will continue on Frontline Policing and other key areas, but we must ensure alignment to Policing Principles.



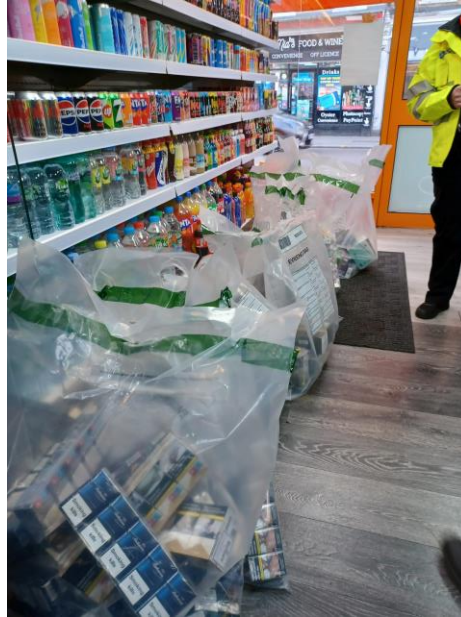
Areas of work for Haringey

Operation Rosewood



23% reduction in offending and led to the arrests of offenders in Wood Green footprint

ILA Team



New Haringey Integrated Licensing and ASB (ILA) Team to focus on local matters. Photo shows Seizure of **£30,000** of illicit goods

Project Vigilant



Dedicated funding and tactics to support VAWG. One being Project vigilant which is shown to reduce offending by up to **24%**



METROPOLITAN
POLICE

Areas of work for Haringey

Clear, Hold, Build (CHB)

- 2 sites in NA – Northumberland Park & Edmonton Green; and Finsbury Park
- Northumberland Park = c.500 arrests, 12 drugs line closed, significant closure orders.
- Reduction in 10-15% crime across those wards, and contributing to a wider reduction across all of Haringey.
- Finsbury Park = c.600 arrests, robbery down 32%, VWI down 21%.

London Race Action Plan (LRAP)

- September 2024 LRAP launched across London
- New bi-monthly meetings held with the community

Comms and Engagement

- New Integrated Comms and Engagement (ICE) team within Haringey Neighbourhood Policing
- Haringey Whatsapp created.
- Streamlined X and Facebook channels to make more effective.
- Podcast underway



Areas of work for Haringey

Operation Nightingale

- 4 sites in Haringey that see Home Office funding for Officer time in the locations – Wood Green, West Green, Finsbury Park, Seven sisters.

Stop and Search (data to 31/01/25)

- 3,904 Stops conducted in last 12 months (3.2% of all MPS). 1862 **fewer** stops than previous 12 months.
- Breakdown = 86% adult; 69% male; 38% black; 38% white;
- 1325 positive Outcomes (criminality detection rate of 33.9%). A rise of 5.5% from previous 12 months.
- *Comparator (Enfield - 3683 stops (3.1% of MPS). 1248 Positive Outcomes (CDR of 35%); Up 24% on previous 12 months. Breakdown = 85% adult; 72% male; 33% black; 47% white.*

Youth Innovation

- 24 sessions in community youth settings reaching 2500+ young people
- 6 more sessions planned before September 2025 reaching a further 1000

